



AL IMAN
COLLEGE

HOW TO USE SEQTA ENGAGE

How to use SEQTA Engage

We are introducing a new learning management system for the students. It is called **SEQTA Engage**. This system allows parents to keep track of their child's progress, homework, pastoral care and academic reports.

1. You will receive a welcome email for **SEQTA Engage portal**.
2. Navigate to: <https://engage.aliman.vic.edu.au/>
3. Enter your username, password and press 'Log in' button.



AL IMAN
COLLEGE

USER NAME

PASSWORD

Log In >

Al Iman College
Parent Portal

[Forgot your password?](#)

SEQTA Engage

- Navigate through the information bar to access key information such as your child’s Pastoral care details, notices, course outline and academic reports.

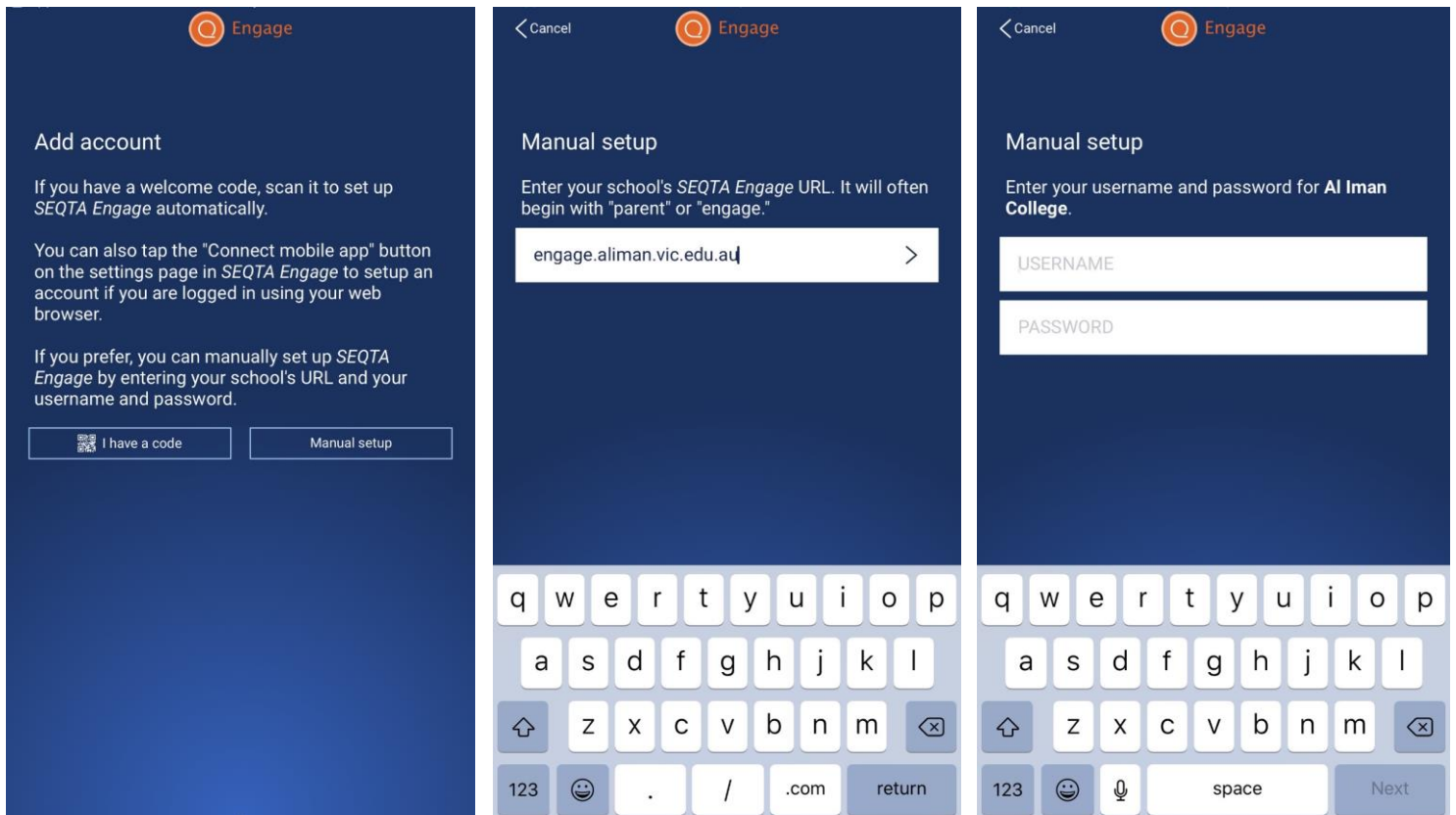
Engage	
Welcome	Welcome page
Courses	Allocated Subjects and home work
Dashboard	Pastoral care details and notifications
Direct Messages	Communication with the teacher and staff
Documents	General school documents
Notices	Upcoming events and news from school
Reports	Academic reports
Settings	Password management and Customize your portal

- Mobile application for SEQTA Engage is available on Apple and Android Play Store.

Mobile apps



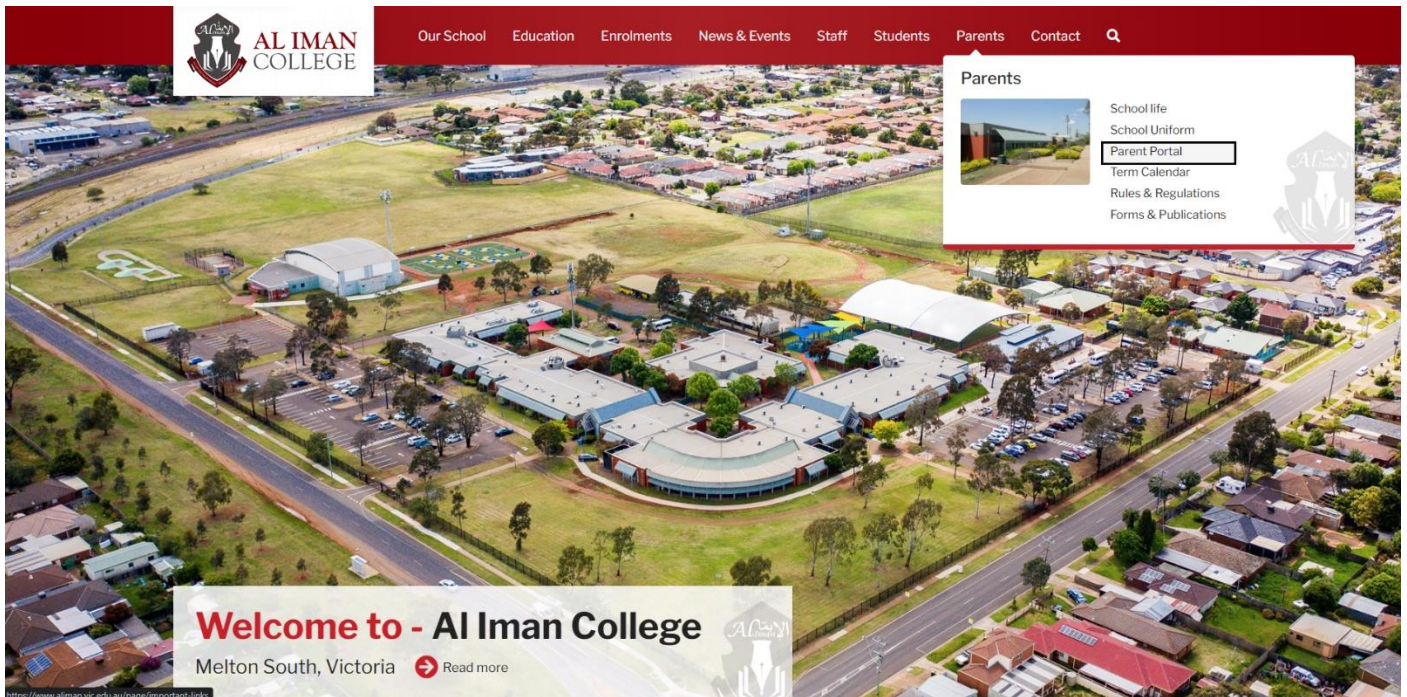
- Open the app and type the school SEQTA engage URL engage.aliman.vic.edu.au then login details.



- SEQTA Engage password can reset using the login page. Type your name in the username section (this does not have to be your SEQTA username) and **click** on the **Forgot your password** tab.



8. You can navigate to SEQTA engage from the “Parents tab” of our website: <https://aliman.vic.edu.au/>.



9. Click on SEQTA Engage

Welcome to Portal page

